



Beaufort County Public Works

Stormwater Infrastructure

Project Summary

Project Summary: Varsity Street

Activity: Routine/Preventive Maintenance

Narrative Description of Project:

Completion: May-14

Project improved 2,507 L.F. of drainage system. Cleaned out 2,507 L.F. of roadside ditch. Jetted (3) crossline pipes and pipes and (16) driveway pipes.

2014-621 / Varsity Street	Labor Hours	Labor Cost	Equipment Cost	Material Cost	Contractor Cost	Indirect Labor	Total Cost
AUDIT / Audit Project	0.5	\$10.23	\$0.00	\$0.00	\$0.00	\$6.62	\$16.85
DPJT / Driveway Pipe - Jetted	44.0	\$951.63	\$487.52	\$252.76	\$0.00	\$630.96	\$2,322.87
HAUL / Hauling	68.5	\$1,481.66	\$732.95	\$360.59	\$0.00	\$959.04	\$3,534.24
ONJV / Onsite Job Visit	38.0	\$1,260.71	\$137.56	\$90.00	\$0.00	\$895.93	\$2,384.20
RSDCL / Roadside Ditch - Cleanout	336.0	\$7,058.42	\$976.00	\$338.53	\$0.00	\$4,705.92	\$13,078.87
2014-621 / Varsity Street Sub Total	487.0	\$10,762.65	\$2,334.03	\$1,041.88	\$0.00	\$7,198.46	\$21,337.02
Grand Total	487.0	\$10,762.65	\$2,334.03	\$1,041.88	\$0.00	\$7,198.46	\$21,337.02

Before



During



After



**Project: Varsity Street Channel #1
Map 1**

**Activity: Routine/
Preventive
Maintenance**















**Project #:
2014-621**

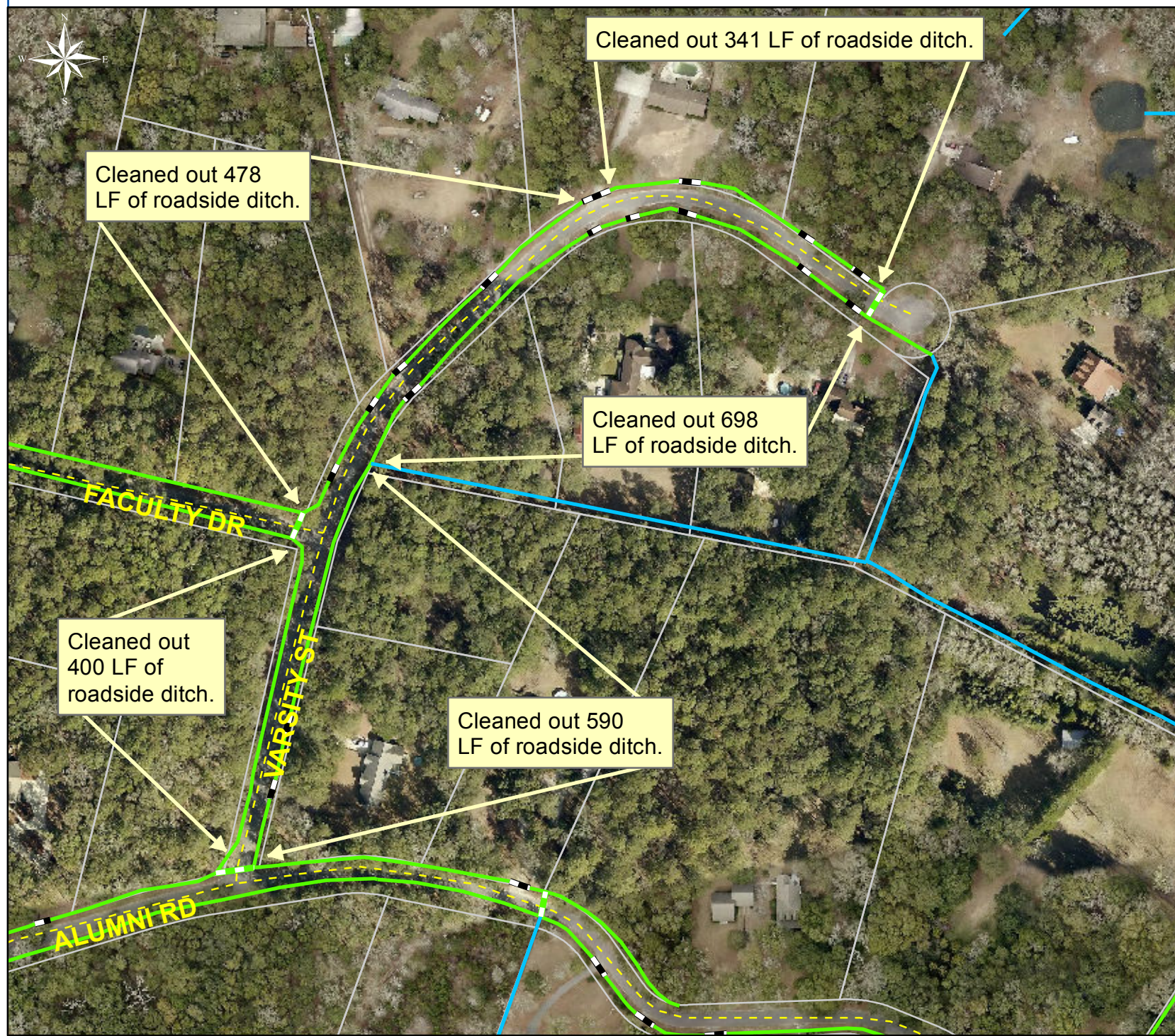
**Township: Lady's
Island**

**Completed:
May 2014**

Legend

TYPE

-  River
-  Creek/Stream
-  River/Creek/Marsh BANK
-  Channel (fka Outfall)
-  Channel Pipe
-  Lateral
-  Lateral Pipe
-  Roadside
-  Roadside Pipe
-  Road Pipe
-  Crossline Pipe
-  Driveway Pipe
-  Access Pipe
-  Bleeder Pipe



1 inch = 183 feet

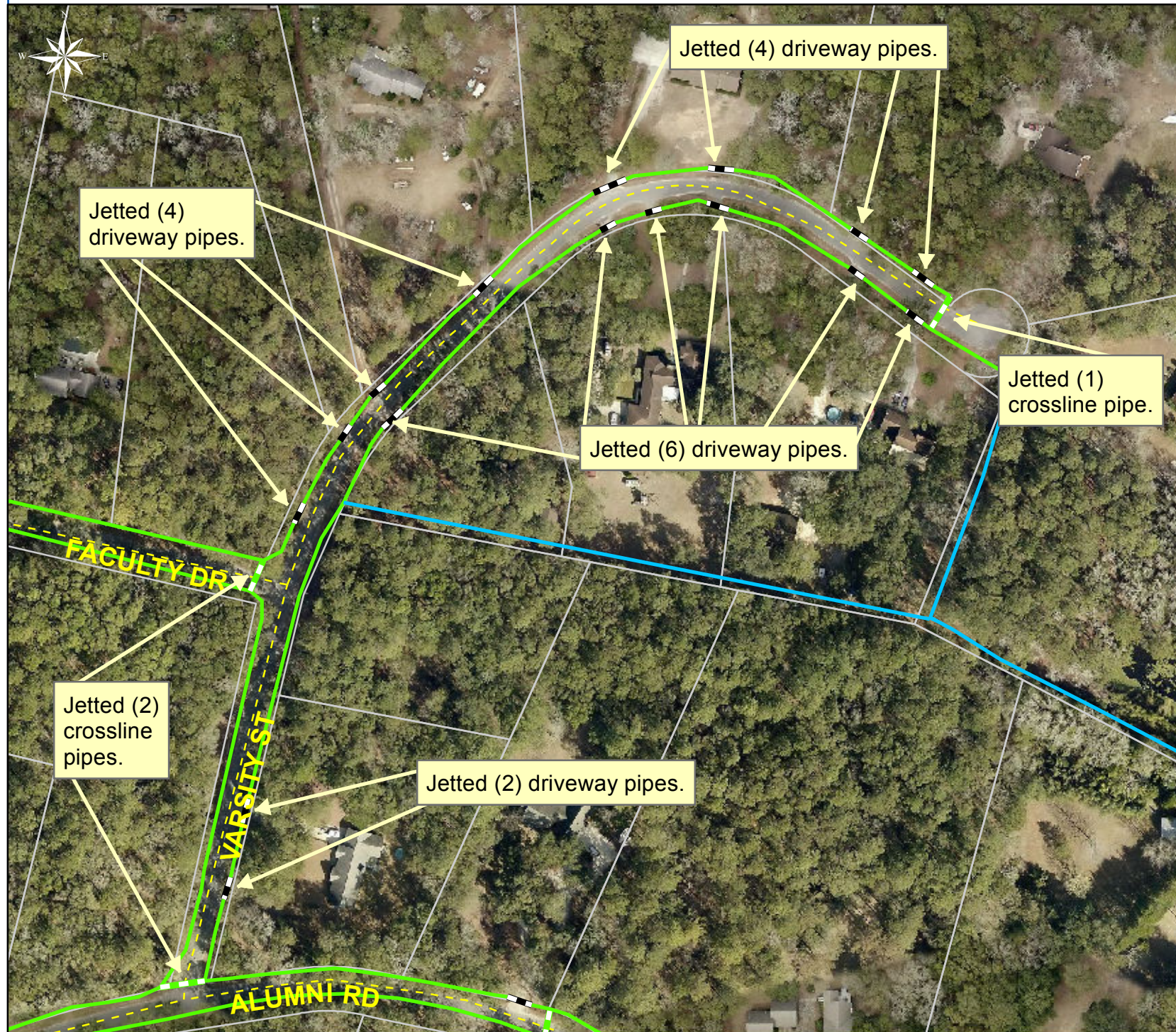
**Project: Varsity Street Channel #1
Map 2**

Activity: Vacuum Truck

Project #: 2014-621

Township: Lady's Island

Completed: May 2014



Legend

TYPE	
	River
	Creek/Stream
	River/Creek/Marsh BANK
	Channel (fka Outfall)
	Channel Pipe
	Lateral
	Lateral Pipe
	Roadside
	Roadside Pipe
	Road Pipe
	Crossline Pipe
	Driveway Pipe
	Access Pipe
	Bleeder Pipe



1 inch = 154 feet

Prepared By: BC Stormwater Management Utility

Date Print: 6/17/14

File: C:/sethdata/projects/projectmaps/Vac/Varsity St 201-621 Map2